

2-D Color Vision Measuring System Quick Image Series



Mitutoyo Corporation
80th Anniversary
Since 1934

The ultimate in simple operation with one-click instant measurement



Vision Measuring Systems



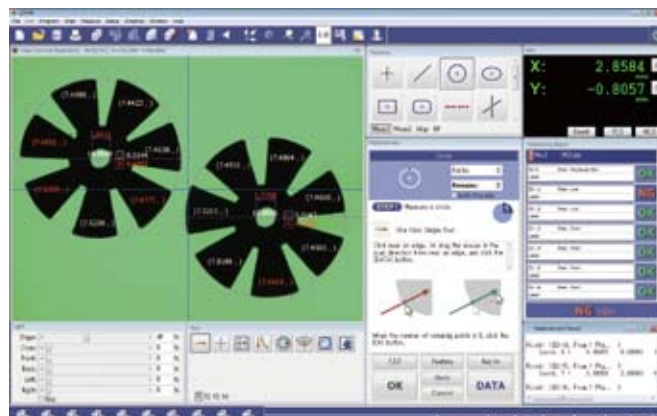
2-D Color Vision Measuring System Quick Image Series



FEATURES

- Measurement is performed with a single click after setting the workpiece in place.
- The telecentric optical system with its extreme focal depth needs no focusing even on a stepped workpiece.
- The measurement result and tolerancing screen is understandable at a glance. A quick GO/NG judgment of measurement results promotes the efficiency of your quality control system.
- An illustrated guidance tool provides instructions for carrying out measurement, making a manual unnecessary.

QIPAK Screen



SPECIFICATIONS

| | | QI-A | | QI-B | |
|---------------------------------|--------------------------------------------|------------------------------------------------------------------------------------------------------------------|----------------------|-------------|----------------------|
| View field | | 32x24mm | | 12.8x9.6mm | |
| Measurement mode | | Normal mode | High resolution mode | Normal mode | High resolution mode |
| Measuring range (X, Y axes) | | QI lineup of 5 models with measuring ranges: 100x100mm, 200x100mm, 200x170mm, 300x170mm, 400x200mm | | | |
| Travel range (Z axis) | | 100mm | | | |
| Accuracy * | Measurement accuracy within the screen | ±4μm | ±2μm | ±3μm | ±1.5μm |
| | Repeatability within the screen (±2σ) | ±2μm | ±1μm | ±1μm | ±0.7μm |
| | Measurement accuracy (U1xy) | ± (3.5+0.02L) μm, L: arbitrary measuring length (mm) | | | |
| Imaging device | | 3 megapixel, 1/2", color-compatible | | | |
| Optical system | Magnification (Telecentric Optical System) | 0.2X | | 0.5X | |
| | Working distance | 90mm | | | |
| | Depth of focus | ±11mm | ±0.6mm | ±1.8mm | ±0.6mm |
| Illumination | | Transmitted light: Green LED telecentric illumination; Co-axial Light: White LED; Ring light: quadrant white LED | | | |
| Accuracy guaranteed temperature | | 20±1°C | | | |

* Inspected to Mitutoyo standard.

Mitutoyo

Mitutoyo Corporation

20-1, Sakado 1-Chome,
Takatsu-ku, Kawasaki-shi,
Kanagawa 213-8533, Japan
T +81 (0) 44 813-8230
F +81 (0) 44 813-8231
<http://www.mitutoyo.co.jp>



Find additional product literature and our
product catalogue

<http://www.mitutoyo.co.jp/global.html>

Note: All information regarding our products, and in particular the illustrations, drawings, dimensional and performance data contained in this pamphlet, as well as other technical data are to be regarded as approximate average values. We therefore reserve the right to make changes to the corresponding designs, dimensions and weights. The stated standards, similar technical regulations, descriptions and illustrations of the products were valid at the time of printing. Only quotations submitted by ourselves may be regarded as definitive.
Our products are classified as regulated items under Japanese Foreign Exchange and Foreign Trade Law. Please consult us in advance if you wish to export our products to any other country.
If the purchased product is exported, even though it is not a regulated item (Catch-All controls item), the customer service available for that product may be affected. If you have any questions, please consult your local Mitutoyo sales office.

Coordinate Measuring Machines

Vision Measuring Systems

Form Measurement

Optical Measuring

Sensor Systems

Test Equipment and
Seismometers

Digital Scale and DRO Systems

Small Tool Instruments and
Data Management